

# BF-6500

Automatic Hematology Analyzer



## Specifications :

Test Item	WBC, RBC, HGB, HCT, MCV, MCH, MCHC, PLT, NEUT%, LYMPH%, MONO%, EO%, BASO%, NEUT#, LYMPH#, MONO#, EO#, BASO#, RDW-SD, RDW-CV, PDW, MPV, PCT, P-LCR
Research Parameter	BLAST#, IMM#, LEFT#, BLAST%, IMM%, LEFT#, ABNLYM#, NRBC#, ABNLYM% NRBC%
Test Principle	Semiconductor laser flow cytometry combined with cytochemical staining, impedance, environmental friendly cyanide-free colorimetry
Throughput	CBC+DIFF mode 60 samples/h
Analysis Mode	CBC mode, CBC+DIFF mode
Sample Type	Whole blood, pre-dilution blood
Sampling Device	Manual sampling
Data Storage	With a storage capacity of 100,000 patients' results, including scattergram, histogram and patient's information Multi QC methods including X, X-B, L-J, X and L-J totally 12 documents, 400 results/document. X-B can save 1000 results.
Language	English
Display Type	External computer
Report Form	A variety of print formats can be pre-programmed. User-defined format is also available
Expansion Function	USB port, internet port, support U-Disk, printer, mouse and keyboard, etc.
Working Condition	Temperature 18-30°C, humidity ≤75%
Power	100-240VAC 50/60 Hz



ISO 9001:2008 and ISO 13485:2003

## DIRUI INDUSTRIAL CO.,LTD.

95 Yunhe Street, New & High Tech, Development Zone  
Changchun, Jilin 130012, P.R. China  
Tel: +86 431 85100409 Fax: +86 431 85172581  
E-mail: dirui@dirui.com.cn Http://www.dirui.com.cn



**PT SETIA ANUGRAH MEDIKA**  
*The Source of Diagnostic Products*

Mitra Suter Boulevard Blok B No. 39, Jl. Yos Sudarso Km. 88, Jakarta 14350  
Telp: (021) 63205261, 63384719, Fax: (021) 63204719  
Email: setiamedika@setiaindonesia.com

\* Specifications subject to change without notice.  
20110828



# BF-6500

Automatic Hematology Analyzer



# BF-6500

Automatic Hematology Analyzer

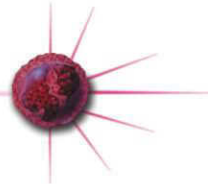


- Semiconductor laser flow cytometry combined with cytochemical staining technique, impedance technique and environmental friendly cyanide-free colorimetry
- Throughput : 60 samples/h
- CBC mode, CBC+DIFF mode
- Whole blood, pre-dilution blood
- With a storage capacity of 100, 000 patients' results, including scattergram, histogram and patient's information
- A variety of print formats can be pre-programmed. User-defined format is also available
- Sample aspiration volume :

Whole blood :	CBC mode	10 $\mu$ L
	CBC+DIFF mode	20 $\mu$ L
Pre-dilution blood :	CBC mode	10 $\mu$ L
	CBC+DIFF mode	20 $\mu$ L

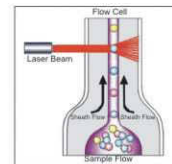


## DIRUI



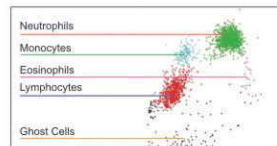
### Semiconductor laser flow cytometry combined with cytochemical staining

BF-6500 Automatic Hematology Analyzer adopting high stability, long life and economical semiconductor laser as light source of cell flow analysis system. Multi-angle laser scattering to accurately test cell size, cell nucleus, cell content granulars and complexity information, and combine with cytochemical staining technique to conduct differential to WBCs. At the same time, screening out the abnormal cells, greatly increased the screening rate of abnormal samples.

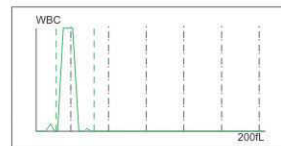


### Dual-channel WBCs 5-diff

**DIFF channel** : Lyse agent dissolve RBCs and hemoglobin, and conducting specific stain to eosinophils, through the detection of semiconductor laser flow scattering technique, lymphocytes, monocytes, neutrophils and eosinophils will be distinguished, and displayed in the DIFF channel

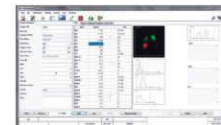


**BASO channel** : Dedicated lyse agent keeps basophils maintain their original form, other cells dissolve or atrophy. Basophils number and the number of WBCs can be accurately tested.



### English operation interface and data management system

English operation system and graphical operation interface contribute to its clear and easy operation. A variety of functions, such as counting, QC, data review and service are provided. With USB ports and network port, available for connecting to LIS which provide adequate expansion space for the equipment.



### Accurate screening function

Built in re-examination rule, and accurately screening out the abnormal samples that need to be re-examined, greatly improve the ability of the screening. Users can also define the re-examination rules according to the crowd, age, type. The most accurate test results are provided

