

## Workflow of DL-Bt System



## DL-Bt64

Automated Blood Culture Detection System

### Technical Specifications :

<b>Testing Principles</b>	: Colorimetry & Carbonate sensor
<b>Sample Type</b>	: Blood and various sterile body fluid
<b>Capacity</b>	: 64 bottles
<b>Detection Method</b>	: 1. Adopt continuous swinging vibration mode to increase bacterial growth, which enhances the detection rate of microorganism, even fastidious ones. 2. Each vial cell has its own independent detector, which continuously monitors the real-time status of bottles. 3. The instrument detects the bottles every 10 minutes to optimize detection time and increase its precision.
<b>Bottle Loading</b>	: Loading and unloading at any time
<b>Monitor</b>	: Internal LCD 8" touch screen
<b>Working environment</b>	: Environmental temperature : 5 °C - 40 °C Relative humidity : 10% - 90%
<b>Atmospheric pressure</b>	: 76kPa - 106kPa;
<b>Power supply</b>	: AC220V±22V, 50Hz±1Hz
<b>Dimension &amp; Weight</b>	: 575*560*950mm; 80 kg

*Specifications and appearance are subject to change without notice.*

### Zuhai DL Biotech Co., Ltd.

Add : 19 Jinhai Rd, Sacao Town, Jinwan Zuhai, Guangdong, 519041, P.R. China  
Tel : +86 756 6292028; Fax: +86 756 3391389  
Email : dl@medicall.com;  
Website : www.medicall.com



**PT SETIA ANUGRAH MEDIKA**  
*The Source of Diagnostic Products*  
18th Street Boulevard Blok B No. 31, Jl. Yos Sudarso Kav. 33, Jakarta 14220  
Telp. : (021) 6200621, 6204713 Fax : (021) 63304718  
Email : setia@medica.com

Exclusive distributor :



## DL-Bt64

Automated Blood Culture  
Detection System

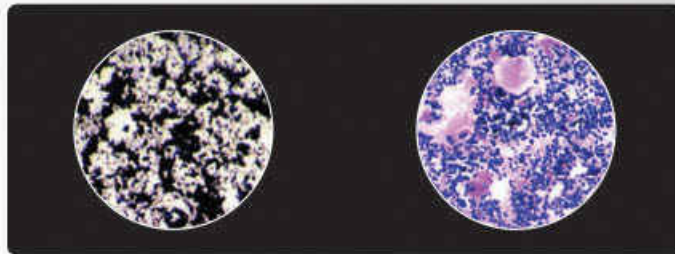


# DL Blood Culture Bottle



## Culture bottle type :

1. Adult aerobic / anaerobic blood culture bottle.
2. Children's blood culture bottle.



Carbon

Resin

## Advantages of Resin Media :

1. Proven, effective neutralization of a wide variety of antimicrobial improves recovery and shortens the time for detection.
2. Resin beads can lyse WBC and release bacteria inside to improve detection rate.
3. Colorless resin beads won't cause interference of microscope examination against activated carbon.

## DL Blood Culture Bottle Features

1. Detection of a wide range of microbes, including fungi, even fastidious bacteria.
2. Multi-layer polymeric fiber bottle. Light weight and unbreakable, avoid biohazard.
3. Delayed-vial-entry capabilities up to 48 hours at room temperature.
4. Vacuum blood sampling. Improving safety and cause less contamination.

Bacteria name & type	Colony-Forming Units (CFU)	Result report time (h)
S. pyogenes, S. pneumoniae	≤100	10 - 17
A. haemolyticus, A. baumannii	≤100	11 - 24
E. coli, P. aeruginosa	≤100	7 - 24
Haemophilus, gonococcus	≤100	15 - 40
Fungus	≤100	15 - 48

## DL-Bt Blood Culture System Features

- Test principles : Colorimetry & Carbonate sensor
- Capacity: 64,112 bottles mainly
- Sample type: Blood and various sterile body fluid
- Linux System with LCD touch screen.
- LIS available.
- Data analysis and statistics.
- Adopt continuous swinging vibration culture mode.
- Detection in every 10 minutes by each independent detector.
- Alarm by audio, door light flash and screen flash.
- Together with barcode scanner for easy data input.